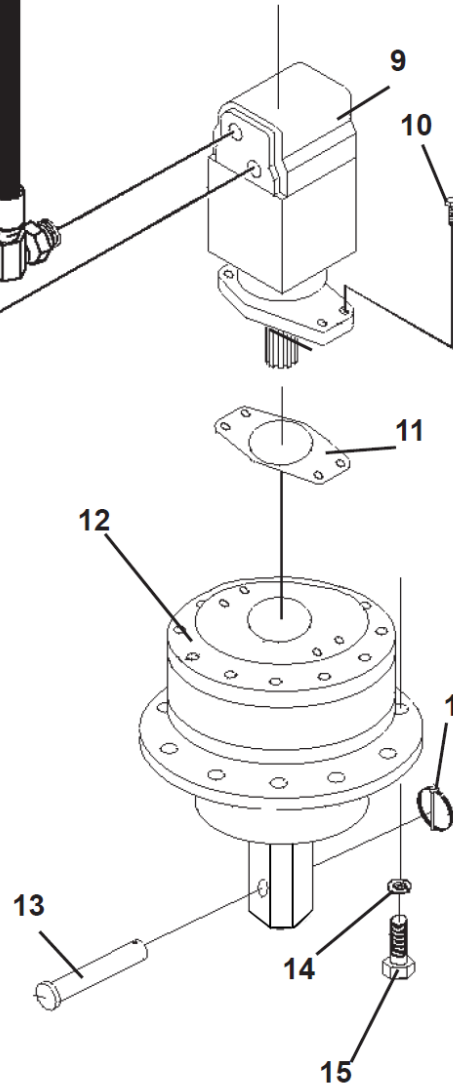
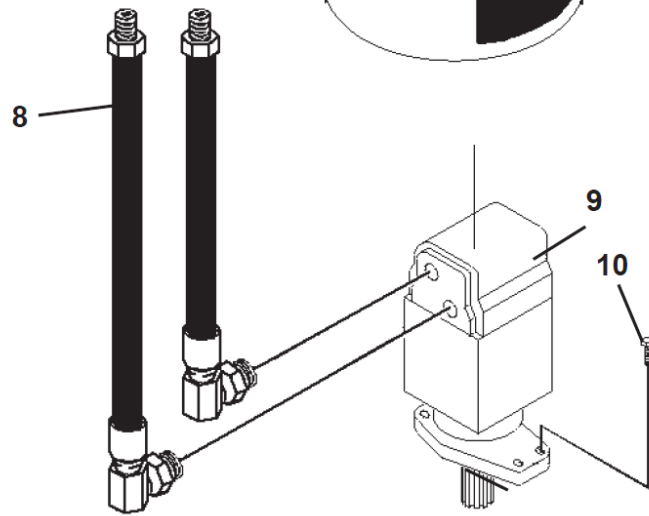
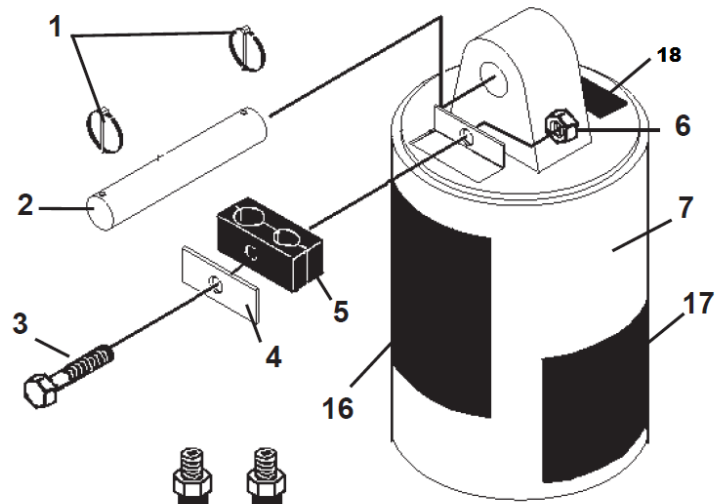


Item	Qty	Part No.	Name	Additional Info
1	3	21169	Lynch Pin	
2	1	22256	Pivot Pin 1.25" X 6.00"	
3	1	1030	.31" UNC X 3.00" Hex Capscrew	
4	1	22315	Hose Clamp Plate	
5	1	22316	Hose Clamp Cushion	
6	1	1753	.31" UNC Nylock Nut	
7	1	23533	Planetary / Motor Housing	
8	2	37968	Hose Kit	
9	1	85726	Hydraulic Motor 18.3 CID	Bottom Ports
9.1	1	46282	Replacement Seal Kit	(Motor without bolt-on pilot plate. See Operator's Manuals for motor identification.) See Comments for Warranty Information.
9.1	1	46388	Replacement Seal Kit	(Motor with bolt-on pilot plate. See Operator's Manuals for motor identification.) See Comments for Warranty Information.
9	1	21952	Hydraulic Motor 18.3 CID	Top Ports
9.1	1	21777	Replacement Seal Kit	Used on 21952 Motor ONLY. See Comments for Warranty Information.
10	4	1907	.50" UNC X 1.25" Socket Head Capscrew	(Install using Loctite 243 Blue)
11	1	100813	Motor Gasket	
12	1	REF	SERIAL NUMBER REQUIRED	
12	1	23526	2" Hex Planetary - Digga	Serial Number 322509 & DOWN
12.1	1	33510	Replacement Output Shaft Seal	See Comments for Warranty Information.
12	1	117576	2" Hex Planetary - Auburn	Serial Number 322510 & UP
12.2	1	45695	Replacement Output Shaft Seal	Serial Number 371393 & UP. See Comments for Warranty Information.
12.2	1	117933	Replacement Output Shaft Seal	Serial Number 322510 UP TO 371392. See Comments for Warranty Information., RFQ - Please Call for Price Quote



Item	Qty	Part No.	Name	Additional Info
13	1	22263	Pin .75" X 4.50"	
14	8	1503	.38" Lock Washer	
15	8	1046	.38" UNC X 1.75" Hex Capscrew	
16	1	40550	X1975 Model Number Decal	
17	2	22680	Danger! Read Manual, Entanglement and Underground Utility Hazard	
18	1	NA	Serial Tag Location	

Comments for Page: 2" Hex Auger Drive - X1975

Field Replacement of Internal Motor Seals Voids Warranty.