



Skid Steer Loader Attachments



ceattachments.com

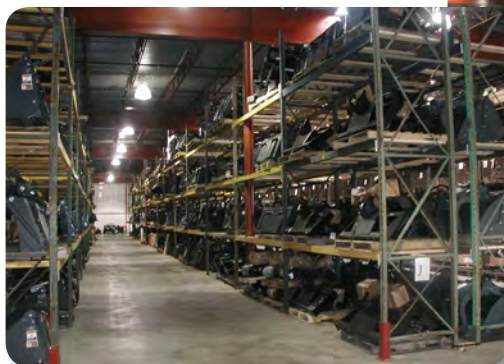
ceattachmentsinc.
Every Attachment for EVERY Job.®

EVERY ATTACHMENT FOR EVERY JOB®!

CEAttachments is your single, trusted source of attachments for every brand or model skid steer or track loader, compact excavator or compact utility tractor. Our products will bring your equipment versatility, increased productivity and a quick return on investment. We are committed to providing the broadest range of high quality attachments in stock and ready for immediate delivery, and you'll find our industry experienced attachment experts to be a trusted resource in determining your attachment needs. Be sure to visit our website - ceattachments.com - for videos of attachments in action, large photos, spec sheets, new products, and more!

PRODUCT AVAILABILITY

Chances are we have what you need in stock for same-day shipment. Our centrally located warehouse provides excellent nationwide delivery service.



HARD-TO-FIND PRODUCTS

If you don't find what you need in our catalog, price list or website, our support staff has the experience and resources to find it for you.

BROAD RANGE

When we say "Every Attachment for Every Job®", we mean it. CEAttachments offers a complete range of quality attachments produced by many industry-leading manufacturers.

WEBSITE



ceattachments.com has all the information you need to know about our company and our attachments. Our search feature and online catalog make it easy to locate attachments you need.

- Watch video of our many attachments in action
- View spec sheets for technical information
- See large, close-up color photos
- Learn about new, unique and featured attachments
- Contact us immediately from our site
- Join our mailing list to receive the latest news

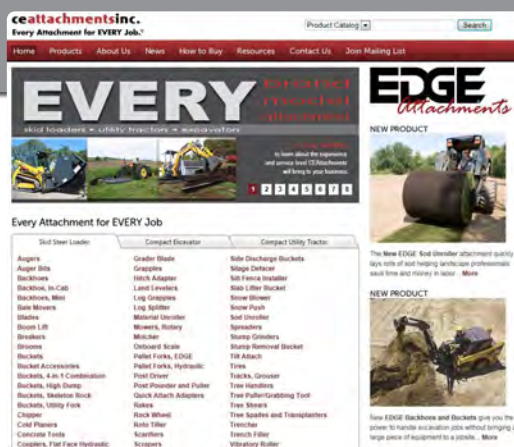


TABLE OF CONTENTS

	<u>Page</u>
Augers	2-3
Chain Drive	
Planetary Drive	
Auger Bits, Adapters and Extensions	
Adapters	4
Quick Attach	
Hydraulic Quick Attach	
Tilt Attach	
Backhoes	5
In-Cab Backhoe	
Backhoe	
Mini-Backhoes	
Bale Movers	6
Bale Squeeze	
Bale Spears, Round	
Bale Spears, Square	
Blades	6-7
Dozer Blades	
Grader Blades	
Snow/Utility Blades	
Trip Edge Snow Blades	
V-Blades	
Boom Lift	7
Breakers	8
Brooms	8-9
Angle Brooms	
Hopper Brooms	
Push Brooms	
Buckets	9
Dirt/Construction	
Bulk Material/Snow	
Utility	
Bucket Accessories	10
4-in1 Combination Buckets	10
High Dump Buckets	10
Side Discharge Buckets	11
Skeleton Rock Buckets & Grapple Buckets	11
Utility Fork Buckets & Grapple Buckets	12
Chipper	12
Cold Planers	13
Concrete Tools	14
Auger Mixing Bucket	
Concrete Placing Bucket	
Mixer	
Slab Lifter Bucket	
Grapples	15-16
Grapple Buckets	
Brush Root Grapples	
Industrial Tine Grapples	
Skeleton Rock Grapples	
Skeleton Tine Grapples	
Utility Fork Grapples	
Bolt on Grapples	
Hitch Adapter	17
Land Levelers	17
Log Grapples	18
Log Splitters	18
Material Unroller	19

	<u>Page</u>
Mowers, Rotary Brush	19
Mulcher	19
Pallet Forks	20
Standard, Medium Walk-Through, Heavy Duty	
Pallet Fork Grapple	
Pallet Forks, Hydraulic	21
Rotating	
Side Shift	
Sliding Tine	
Post Drivers	21
Post Pounder Puller	
Rakes	22
Auto Rakes	
Grader Rakes	
Power Rakes	
Preparator Rakes	
Scarifier Rakes	
Rock Wheel	23
Roto Tillers	23
Scale, Onboard Weighlog	23
Scrapers	24
Feed Alley Scraper	
Manure Scrapers	
Silage Defacer	24
Silt Fence Installers	24
Snow Blades	7
Snow Blowers	25
Snow Buckets	9
Snow Pushes	25
Oscillating	
High Profile	
Low Profile	
Sod Unroller	26
Spreaders	26
Electric Spreader	
Hydraulic Spreader	
Stump Grinders	27
Stump Removal Bucket	27
Tires	28
Solid Flex	
Severe, Heavy Duty, Standard Duty, Value Series	
Tracks	29
Crossbar Tracks	
Hard Pad Tracks	
Soft Pad Tracks	
Tree Handlers	30
Tree Boom	
Tree Handler-Nursery Jaws	
Tree Puller/Grabbing Tool	30
Tree Shears	31
Tree Shear & High Reach Clipper	
Tree Spades	31
Tree Transplanters	32
Trenchers	32
Trench Filler	33
Vibratory Rollers	33

AUGERS

Chain Drive

- Designed for medium to heavy-duty applications
- Popular alternative to the planetary drive augers
- Feature pre-stressed, fully adjustable reduction drives
- Strongest connecting links available
- Choose bits in 2-9/16" Round or 2" Hex output shafts
- Complete units include universal mount, top link, hoses and flat-faced couplers
- Bits sold separately



Model	Weight (lb/kg)	Hyd. Req. (gpm/lpm)	Max. Auger Dia. (in/mm)	Speed (rpm)	Theo. Torque (lbs. ft/Nm)
750CL	337/153	8-20/30-76	24/610	161 @ 20 gpm	1118/1003 @ 3000 psi
1200CL	360/163	10-20/38-76	30/762	106 @ 20 gpm	1724/1547 @ 3000 psi
1650CL	375/170	14-24/53-91	36/914	88 @ 24 gpm	2478/2213 @ 3000 psi
2175CL	430/195	18-24/68-91	48/1219	73 @ 24 gpm	2989/2703 @ 3000 psi

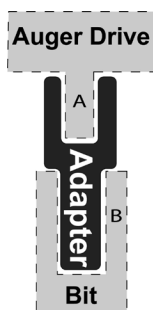


Planetary Drive

- Gear reduction drive units
- Designed for heavy-duty use in commercial and industrial applications
- Ultimate auger attachment for those who demand the best and most durable units
- Choose bits in 2-9/16" Round or 2" Hex output shafts
- Complete units include universal skid steer mount, top link, hoses and couplers
- Bits sold separately

Model	Weight (lb/kg)	Hyd. Req. (gpm/lpm)	Max. Auger Dia. (in/mm)	Speed (rpm)	Theo. Torque (lbs. ft/Nm)
PA275	360/163	16-40/61-151	48/1219	145 @ 40 gpm	3008/4078 @ 4000 psi
PA165	360/163	10-20/38-76	30/763	93 @ 20 gpm	1970/2671 @ 3000 psi
PA220	360/163	16-30/61-114	36/914	94 @ 30 gpm	2831/3838 @ 3000 psi
PA245	360/163	18-30/68-114	48/1219	66 @ 30 gpm	3313/4492 @ 3000 psi

AUGER ADAPTERS AND EXTENSIONS



Auger Adapters

Adapt your round auger drive to a hex bit and vice versa.

Model	Weight (lb/kg)	A Dimension, in (mm)	A Shape	B Dimension, in (mm)	B Shape
RR229	12/5	2 (51)	Round	2.56 (65)	Round
RR292	17/8	2.56 (65)	Round	2 (51)	Round
RH292	17/8	2.56 (65)	Round	2 (51)	Hex
RH22	22/10	2 (51)	Round	2 (51)	Hex
HR22	16/7	2 (51)	Hex	2 (51)	Round
HR229	18/8	2 (51)	Hex	2.56 (65)	Round
HH225	30/14	2 (51)	Hex	2.5 (64)	Hex
HH252	22/10	2.5 (64)	Hex	2 (51)	Hex



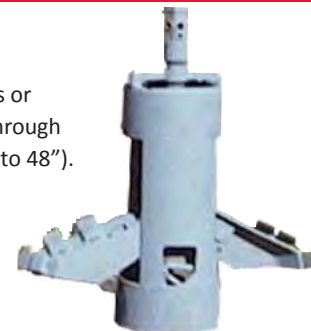
Auger Extensions

- Dig deeper holes
- Lengths from 14" (355 mm) to 48" (1219 mm)
- Available for round or hex output shafts and bits

AUGER BITS

Bell Hole Auger Bit

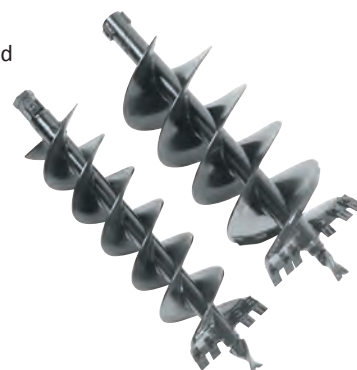
Bell Hole auger bits open up the bottom of a drilled hole for added support to the foundation for setting posts or other construction forms. Insert the bit into a pre-drilled hole and open the blades. Teeth on the blades cut through the dirt to expand the base of the hole into a bell shape that is 24" or 32" wider (from 12" to 36" or from 16" to 48"). Dirt is collected in a bucket at the bottom of the bit that can be emptied when removed from the hole.



Model	Weight (lb/kg)	No. of Teeth	Tooth Style
SQ4	49/22	0	Standard
SQ6	54/24	2	Standard
SQ9	89/40	4	Standard
SQ12	110/50	4	Standard
SQ15	126/57	6	Standard
SQ18	163/74	6	Standard
SQ20	180/82	7	Standard
SQ24	200/91	9	Standard
SQ30	260/118	11	Standard
SQ36	340/154	13	Standard
SQ42	437/198	16	Standard
SQ48	480/218	18	Standard

Standard

- Feature reinforced fabricated boring head
- Double wrapped flighting
- Heat treated replaceable teeth
- "Fishtail" center point
- Approximately 50" in overall length
- Available for round or hex drive augers



Model	Weight (lb/kg)	No. of Teeth	Tooth Style
TSQ18	117/53	8	Standard
TSQ24	160/73	9	Standard
TSQ30	270/122	12	Standard
RSQT24	315/143	12	Conical
TSQ36	348/158	14	Standard
RSQT36	360/163	18	Conical
TSQ42	430/195	16	Standard
TSQ48	531/241	18	Standard

Tree and Shrub

- Smaller auger flighting at the bottom
- Leaves space for root balls, fertilizer or mulch
- Heat treated replaceable teeth
- "Fishtail" center point
- Approximately 50" in overall length
- Available for round or hex drive augers



Model	Weight (lb/kg)	No. of Teeth	Tooth Style
RSQ6	75/34	3	Conical
RSQ9	90/41	6	Conical
RSQ12	110/50	6	Conical
RSQ15	150/68	7	Conical
RSQ18	168/76	8	Conical
RSQ24	208/94	12	Conical
RSQ36	286/130	18	Conical

Rock, Standard

- Reinforced fabricated boring head
- Double wrapped flighting
- Conical carbide replaceable teeth
- Standard "fishtail" center point
- Not intended for use in concrete or asphalt
- Available for round or hex drive augers



Model	Weight (lb/kg)	No. of Teeth	Tooth Style
RSQ9	90/41	6	Conical
RSQ12	110/50	6	Conical
RSQ15	150/68	7	Conical
RSQ18	168/76	8	Conical
RSQ24	208/94	12	Conical
RSQ30	285/129	15	Conical

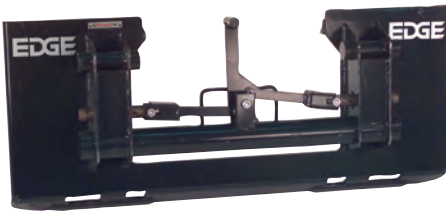
Rock, Conical

- Reinforced fabricated boring head
- Double wrapped flighting
- Conical carbide replaceable teeth
- Conical "bullet-tooth" center point
- Approximately 50" in overall length
- Not intended for use in concrete or asphalt
- Available for round or hex drive augers



ADAPTERS, QUICK ATTACH

Choose an adapter that fits your skid steer and adapts to the attachments that you want to use. Whether it's an old attachment on a new skid steer, or vice versa, you can put all of your attachments to work! You can even use some of your three-point hitch tractor attachments on your skid steer.



Universal to Non-Universal Adapters



Non-Universal to Universal Adapters



3-Point Adapters



Weld-On Bracket

*Other adapters also available.
Call for listing of current stock.*

Hydraulic Quick Attach Adapter



- Couple or uncouple attachments without leaving the cab
- Fast, safe and easy to use
- Works off standard auxiliary hydraulics
- Requires hydraulic adapter when using with powered attachments
- Down-pressure springs assure a locked position
- Flag indicators notify operator when adapter is in unlocked position
- Totally enclosed to protect from dirt, debris and other contaminants
- Few moving parts require less maintenance

Model	Weight (lb/kg)	HP Req.	Cylinder Size(s) (in/mm)
HQASSL	220/100	65+	1.5x2.125/38x54

Tilt Attach Adapter



- Tilts up to 18 degrees in either direction
- Use on hilly terrain or where you need to tilt an attachment
- Tilt landscaping attachments for precise grading and leveling
- Tilt trenchers for vertical cuts even on hills
- Hydraulic attachments require optional valve kit and control box
- Comes complete with hoses and flat face couplers

Model	Weight (lb/kg)	Tilt (degrees)	Depth (in/mm)	Width (in/mm)	Carrier Cap. (lb/kg)
TTUHD	460/209	18	4.2/107	46.75/1187	>1500/>680

BACKHOES

Backhoe, In-Cab

- Remain in the comfort and protection of the cab to operate all controls
- Easy to set up, get in and out of the cab and operate
- 9'4" (2850 mm) digging depth
- 10'11" (3340 mm) reach
- 180 degree pivot rotation
- Vertical stabilizers
- Side-shift for operating next to buildings, fence lines or other obstacles
- Four bucket sizes from 12" (300 mm) to 24" (600 mm)
- Comes standard with auxiliary hydraulics, hoses and flat face couplers



Model	Weight (lb/kg)	Digging Depth (in/mm)	Hyd. Req. (gpm/lpm)	Reach (in/mm)	Side Shift (in/mm)	Overall Width (in/mm)	Stabilizer
BH09IC	1150/522	112/2850	11-15/41-60	131/3340	40/1016	61.5/1562	Vertical

Backhoes

- Power to handle excavation jobs with skid steer or track loader
- Dig utility trenches and septic tanks quickly
- 180 degree boom pivot rotation
- Digging depths from 8'5" (2565 mm) to 11'1" (3378 mm)
- Reach from 10'7" (326 mm) to 14'5" (439 mm)
- Rigid thumb kits optional



Model	Weight (lb/kg)	Digging Depth (in/mm)	Hyd. Req. (gpm/lpm)	Reach (in/mm)	Overall Width (in/mm)
BH485	1010/458	101/2565	9-13/34-49	127/3226	60/1524
BH509B	1425/646	116/2946	9-18/34-68	153/3886	60/1524
BH511B	1594/723	133/3378	9-18/34-68	173/4394	60/1524
BH611B	1847/838	133/3378	9-18/34-68	173/4394	57/1448

Buckets The right size backhoe bucket will allow your backhoe attachment and skid steer or track loader to be even more efficient. Bucket sizes range from 10" (254 mm) to 36" (914 mm) and come standard with teeth.



BACKHOES, MINI

Fixed

- Digging depth 73" (1854 mm)
- Overall reach 75" (1905) from mounting plate
- Bucket dig force of 3895 lbs. (17.3 kN)
- Comes complete with hoses and flat face couplers
- Stabilizers not required
- Relief valve is required in the bucket tilt circuit of the skid steer

With Swing

- 140 degree rotation cushioned swing cylinder for smooth operation
- Digging depth of 76" (1930 mm)
- Overall reach of 78" (1981 mm) from mounting plate
- Comes complete with control box, hoses and flat face couplers
- Stabilizers not required
- Relief valve is required in the bucket tilt circuit of the skid steer



Model	Weight (lb/kg)	Overall Width (in/mm)	Digging Depth (in/mm)	Bucket Dig Force (lbf/kN)
MH73	395/179	47.5/1207	73/1854	3895/17.3

Model	Weight (lb/kg)	Overall Width (in/mm)	Digging Depth (in/mm)	Bucket Dig Force (lbf/kN)
MHS76	535/243	47.5/1207	76/1930	3800/16.9

BALE MOVERS

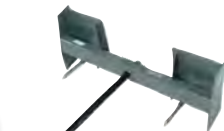
Bale Squeeze



- Excellent for wrapped bales
- Clamps loads from 28" (711 mm) to 80" (2032 mm) wide
- Maximum lift capacity is 2,400 lbs.
- Comes with hoses and couplers

Model	Weight (lb/kg)	Height (in/mm)	Depth (in/mm)	Max. Opening (in/mm)	Cap. (lb/kg)
BS2400	520/236	47/1094	54/1372	80/2032	2400/1089

Bale Spears



Round

- Single and Double Round Bale Spears move round bales up to 3,000 lbs.
- Single round main shaft reinforced with two 12" stabilizer shafts for safer handling

Model	Weight (lb/kg)	Cap. (lb/kg)	Tine Type	Main Tine (qty, in/mm)	Stabilizer Tine (qty, in/mm)
SSB2200	129/59	2200/998	Turned Steel	1, 42/1067	2, 12/305
SSB3000	146/66	3000/1360	Turned Steel	2, 42/1067	0

Square

- For standard or large rectangular bales 3,000 to 4,000 lbs (1360 to 1814 kg)
- Optional upright kit (shown) handles two large square bales

Model	Weight (lb/kg)	Cap. (lb/kg)	Tine Type	Main Tine (qty, in/mm)
SSRB330	165/75	3000/1360	Turned Steel	3, 26/660
SSRB340	190/86	4000/1814	Turned Steel	3, 42/1067

BLADES

Dozer Blades



- Scraping and leveling projects completed quickly and easily
- Sizes 72" (1828 mm) to 108" (2743 mm)
- 30 degree right and left angling, 10 degree right and left tilt
- Replaceable cutting edges, hoses and flat-faced couplers included
- NOT to be used for snow removal

Model	Weight (lb/kg)	Straight Path (in/mm)	Angled Path (in/mm)	Angle (degrees)	Tilt (degrees)
DB72	1360/617	72/1828	63.5/1612	30	10
DB84	1453/659	84/2134	74.2/1884	30	10
DB96	1507/684	96/2438	84.7/2151	30	10
DB108	1570/712	108/2743	93.5/2374	30	10

Grader Blade



- High-performance grading attachment
- 96" (2438 mm) blade
- Control box for in-cab hydraulic control of angle and tilt
- Reversible/replaceable cutting edge
- Proportional current valve gradually adjusts height, angle and tilt
- Comes complete with hoses and flat face couplers

Model	Weight (lb/kg)	Width (in/mm)	Length (in/mm)	HP Req.
GA8	1200/544	96/2438	101/2565	45

Shown with optional end plate kit

BLADES, SNOW

Snow/Utility Blades

- Standard and heavy-duty models
- Replaceable steel cutting edges standard, optional rubber cutting edges and height extenders
- Right and left manual and hydraulic angling up to 30 degrees
- Trip springs and skid shoes standard
- Hoses and flat-faced couplers included

Model	Weight (lb/kg)	Overall Width (in/mm)	Angled Path (in/mm)	Angle (degrees)	Height (in/mm)
USB60	680/308	60/1524	51/1295	30	28/711
USB72	560/254	72/1829	62.25/1581	30	28/711
USB84	750/340	84/2134	72.5/1842	30	28/711
USB96	795/361	96/2438	82.9/2106	30	28/711
USB108	835/379	108/2743	93.25/2369	30	28/711
HDSB84	1186/538	84/2134	69/1753	30	32/812
HDSB96	1232/559	96/2438	79/2007	30	32/812
HDSB108	1309/594	108/2743	88/2235	30	32/812
HDSB120	1393/632	120/3048	98/2489	30	32/812



Heavy Duty



Standard Duty

Trip Edge Snow Blades

- Four compression springs allow up to an 8 degree oscillation
- 5/8" x 8" reversible steel cutting edge follows uneven surfaces
- Right and left hydraulic angle up to 30 degrees and adjustable skid shoes
- Recommended for loaders with operating capacity >1,500 lbs.

Model	Weight (lb/kg)	Overall Width (in/mm)	Angled Path (in/mm)	Angle (degrees)	Oscillation (degrees)
SBS84	1050/476	86/2184	74/1880	30	8
SBS96	1110/503	98/2489	84/2134	30	8
SBS108	1170/531	110/2794	95/2413	30	8
SBS120	1230/558	120/3048	104/2642	30	8



Optional rubber edges available.

V-Blades

- Versatile uses for plowing snow, moving dirt, gravel or sand
- Angles up to 30 degrees
- 5-Configurations: V-shape, scooped, straight, right or left
- Comes standard with reversible steel cutting edges

Model	Weight (lb/kg)	Straight Path (in/mm)	Angled Path (in/mm)	Height (in/mm)
VB5	655/297	62/1575	54/1372	28.25/718
VB6	695/315	75/1905	64.5/1638	28.25/718
VB7	735/333	86/2184	75/1905	28.25/718
VB8	775/352	98/2489	85.5/2172	28.25/718
VB9	815/370	110/2794	96/2438	28.25/718



Optional vertical blade extensions and rubber edges available.

BOOM LIFT

Model	Weight (lb/kg)	Length (in/mm)	Cap. (lb/kg)
TB77	182/83	59.25/1505	3500/1588

- Multi-purpose Boom Lift for loading and unloading attachments
- Move construction materials from hard-to-reach areas
- Transporting trees, place and remove concrete forms and more
- Simple and economical attachment that makes equipment more versatile



BREAKERS



- Pulverize concrete and rock quickly and easily into load-ready debris
- Break through toughest materials for demolition, construction and municipal jobs
- Breaking force generated by hydraulic flow and pressure from the skid steer loader
- Nitrogen charged backhead maximizes hammer production
- Advanced hydraulic circuit increases cycle times, tool penetration and productivity
- No through-bolts to torque or replace
- Front wear bushing replaces easily for optimal working conditions
- Comes standard with moil point tool, hoses, hose saver kit and flat-faced couplers
- EBS375 and EBS550 models feature a control valve that regulates pressure and flow

Breaker Tools



Model	Weight (lb/kg)	Hyd. Req. (gpm/lpm)	Impact Energy Class (lb-ft/J)	Cycles/Blows per Min.
EBS275	187/85	5-9/19-34	275/373	600-1500
EBS375	545/247	6-15/23-57	375/508	600-1300
EBS550	784/356	8-18/30-68	550/746	600-1100
EBS800	840/381	11-19/42-72	800/1085	500-1000
EB100	950/431	13-40/49-151	1000/1356	650-1500

BROOMS

Angle Broom



Optional dust control kit (shown above) and electro-hydraulic angle kit available.



- Use year-round for removal of snow or debris
- Comes standard with 50/50 poly/wire combo brush material
- Manual angle up to 30 degrees - hydraulic angle kits optional
- Fold-away stand protects bristles in storage
- Optional Dust Control Kit reduces dust and flying debris (shown)
- Comes complete with hose saver kit, hoses and flat face couplers

Model	Weight (lb/kg)	Hyd. Req. (gpm/lpm)	Angled Path (in/mm)	Brush Dia. (in/mm)	No. Brush Segments	No. of Motors
AB48-26	380/172	8-15/30-57	41.5/1054	26/660	25	1
AB60-26	440/200	8-15/30-57	52/1321	26/660	32	1
AB60	793/360	12-25/45-95	54/1372	32/813	29	1
AB72	866/393	12-25/45-95	64/1626	32/813	35	1
AB84	915/415	12-25/45-95	75/1905	32/813	41	1
AB96	953/432	12-25/45-95	85/2159	32/813	47	1
AB72D	890/404	18-36/68-136	64/1626	32/813	35	2
AB84D	953/432	18-36/68-136	75/1905	32/813	41	2
AB96D	991/450	18-36/68-136	85/2159	32/813	47	2

Hopper Broom



- Bi-directional collection broom sweeps in forward and reverse
- Use for milling, material pickup, road maintenance, cleanup and more
- No caster wheel allows sweeping close to objects
- Shroud protects objects flying debris
- Cost-effective investment for contractors and rental houses
- Optional Dust Control Kit reduces dust and flying debris
- Optional Gutter Brush sweeps debris from curbsides or hard to reach areas
- Comes complete with hoses, couplers, and bolt-on cutting edge.

Model	Weight (lb/kg)	Overall Width (in/mm)	Hyd. Req. (gpm/lpm)	Brush Dia. (in/mm)	No. Brush Segments	Cap. (ft³/m³)
SHB60	840/381	74.1/1882	15-25/57-94	26/660	34	13.9/0.39
SHB72	956/434	86.1/2187	15-25/57-94	26/660	40	16.8/0.48
SHB84	1072/486	98.1/2492	15-25/57-94	26/660	48	19.8/0.56

Optional Dust Control Kit and Gutter Brush Kit.



Push Broom

- Economical way to push away dirt, leaves, snow and more
- Reduce flying stones or debris near buildings or vehicles
- Simple design minimizes dust while operating
- Includes mount and hoses (couplers sold separately)
- Replaceable heavy gauge polypropylene brushes

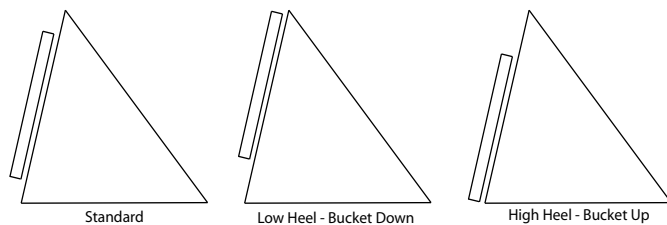


Model	Weight (lb/kg)	Width (in/mm)	Angle (degrees)	Angled Path (in/mm)
PBH60	410/186	60/1524	30	52/1320
PBH72	443/201	72/1828	30	62/1574
PBH96	531/241	96/2438	30	83/2108

BUCKETS

EDGE Dirt/Construction

- Extended or Heavy Duty models
- 48", 54", 60", 66", 72", 78", 84", 90", 96"
- With or without teeth, some with spill guard, high heel or low heel
- Excellent cutting edge visibility and high breakout force
- Ideal for everything from tough digging to material handling



Use standard heel bucket for most skid steer loaders.

Use low heel bucket for skid steer loaders with over the tire steel tracks or with one size larger tire than OEM.

Use high heel bucket for most track loaders.



Optional bolt-on cutting edge, toothbar and serrated edge available.

EDGE Bulk Material/Snow

- High-strength steel construction
- Weld on edge is 6" (152 mm) x 3/4" (19 mm) thick
- Standard-Duty buckets recommended for <2400 lbs.
- Medium-Duty buckets for >1800 lbs., feature 8" mesh window for increased visibility
- Heavy-Duty buckets for >2400 lbs. and 12" mesh window for even greater visibility



Standard Duty
60", 66", 72", 78", 84", 96"



Medium Duty
72", 78", 84", 96", 101"



Heavy Duty
78", 84", 96", 101"



EDGE Utility

- Higher capacity than dirt/construction bucket, without high back of the bulk material bucket
- Great in farming applications, hauling manure and fertilizer
- Optional bolt-on cutting edge, toothbar and serrated edge
- Available in 60", 66", 72", 78", 84"



BUCKET ACCESSORIES

When ordering, specify the bucket's inside dimension, cutting edge thickness, and whether it has a bolt on cutting edge.



Bolt-on Cutting Edge

- Extends life of a bucket by adding a wear edge to the front of the bucket
- Double beveled and reversible, extending the life of the edge
- Various thickness and width options to fit bucket exactly



Serrated Edge

- Designed to penetrate hard, compacted surfaces better than bucket's flat edge
- Bolt on heat treated 3/4" Boron steel makes tough wear edge, extending life of bucket
- Fits buckets from 60" (1524 mm) to 96" (2438 mm)



Toothbar

- Designed for dirt buckets allowing easier penetration into hard, compacted materials
- Standard toothbars have 1" shanks, with replaceable points
- Heavy duty toothbars have 1.5" shanks, with replaceable points



Teeth

- Bolt on teeth are for buckets that are drilled for them (two holes per tooth required)
- Weld on teeth turn your bucket into a digging machine

BUCKETS, 4-IN-1 COMBINATION



Model	Weight (lb/kg)	Overall Width (in/mm)	Inside Width (in/mm)	Depth (in/mm)	Height (in/mm)	Heaped Cap. (ft³/m³)
CBS60	840/381	61.5/1562	60/1524	36.3/922	21.3/541	13.8/.39
CBS66	915/415	67.5/1715	66/1676	36.3/922	21.3/541	15.2/.43
CBS72	960/435	73.5/1867	72/1828	36.3/922	21.3/541	16.6/.47
CBH66	1092/495	67.5/1715	66/1676	36.3/922	21.3/541	15.2/.43
CBH72	1153/523	73.5/1867	72/1829	36.3/922	21.3/541	16.6/.47
CBH78	1224/555	79.5/2019	78/1981	36.3/922	21.3/541	18/.51
CBH84	1285/583	85.5/2172	84/2134	36.3/922	21.3/541	19.3/.55



- One bucket for site cleanup, grading, scraping, grapppling, dozing dirt, brush removal, material spreading and more
- High strength steel clam shell bottom designed to prevent bowing with heavy material
- Two large, guarded cylinders provide powerful clamping
- Standard, heavy-duty and heavy-duty with teeth models
- Heavy-duty buckets feature reinforcement plates and a holding valve to keep clam in locked position
- 3/4" x 6" weld-on cutting edges with holes, bolt-on cutting edges for front dozer edge and rear of clam edge
- Optional cutting edge or serrated edge for front bucket
- All units come complete with hoses and flat face couplers

BUCKETS, HIGH DUMP



- Ideal for loading feed mixers and trucks
- Two heavy-duty hydraulic cylinders pivot bucket for dumping
- Increases vertical lift ~44" and horizontal reach ~13"
- See-through spill guard allows greater visibility
- Optional bolt-on cutting edge
- Recommended for loaders with operating capacities >1800 lbs.
- Comes complete with hoses and flat face couplers

Model	Weight (lb/kg)	Overall Width (in/mm)	Heaped Cap. (ft³/m³)	Height (in/mm)	Depth (in/mm)	Pivot (degrees)
HDB72	1010/458	73.5/1867	32.9/.93	29.8/757	47.3/1201	86
HDB84	1100/499	85.5/2172	38.4/1.09	29.8/757	47.3/1201	86
HDB96	1180/535	97.5/2477	43.9/1.24	29.8/757	47.3/1201	86

SIDE DISCHARGE BUCKETS

Side Discharge Bucket - Sand

- Provides power and precision to quickly lay sand and other materials
- Features baffle brace to keep weight off the belt
- Self-filling bucket with right or left discharge
- Comes complete with hoses and flat face couplers

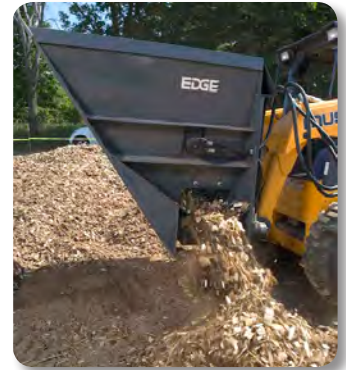
Model	Weight (lb/kg)	Overall Width (in/mm)	Hyd. Req. (gpm/lpm)	Cap. (ft³/m³)
SAND60	860/390	61/1549	12-30/45-113	18/0.50
SAND72	1030/467	73/1854	12-30/45-113	27/0.76



Side Discharge Bucket - Sawdust

- Quickly lay soft and fresh bedding for your herd
- Discharge from both sides of the machine
- Perfect for large farms with multiple stalls
- Comes complete with hoses and flat face couplers

Model	Weight (lb/kg)	Overall Width (in/mm)	Hyd. Req. (gpm/lpm)	Cap. (ft³/m³)
SAW60	910/413	61/1550	12-30/45-113	45/1.27
SAW72	1080/490	73/1854	12-30/45-113	54/1.53
SAW84	1250/567	85/2159	12-30/45-113	63/1.78



BUCKETS, SKELETON ROCK

Skeleton Rock Buckets

- Designed for picking up stones and large, awkward debris
- Grated bottom allows dirt to fall through
- Designed for agricultural, commercial and landscaping industries

Model	Weight (lb/kg)	Overall Width (in/mm)	Tine Spacing (in/mm)	No. of Tines	Height (in/mm)	Depth (in/mm)
SR60	540/245	61/1549	2.9/74	19	21.5/546	42.9/1090
SR66	585/265	67.6/1717	2.9/74	21	21.5/546	42.9/1090
SR72	630/286	74.3/1887	2.9/74	23	21.5/546	42.9/1090
SR78	675/306	80.9/2055	2.9/74	25	21.5/546	42.9/1090
SR84	720/327	87.5/2223	2.9/74	27	21.5/546	42.9/1090



Skeleton Rock Grapples

- See-through design allows for excellent visibility and complete protection of hose routing
- Features bushings at all pivot locations and fully gusseted tine tips
- Designed to scrape with loader arms against boom stops
- Comes complete with hoses and flat face couplers

Model	Weight (lb/kg)	Overall Width (in/mm)	Tine Spacing (in/mm)	No. of Tines	Depth (in/mm)	Cylinder Size(s) (in/mm)	Grapple Opening (in/mm)
SRG60	940/426	61/1549	2.9/74	19	42.9/1090	2x8.375/51x213	37/940
SRG66	990/449	67.6/1717	2.9/74	21	42.9/1090	2x8.375/51x213	37/940
SRG72	1035/469	74.3/1887	2.9/74	23	42.9/1090	2x8.375/51x213	37/940
SRG78	1080/490	80.9/2055	2.9/74	25	42.9/1090	2x8.375/51x213	37/940
SRG84	1125/510	87.5/2223	2.9/74	27	42.9/1090	2x8.375/51x213	37/940



BUCKETS, UTILITY FORK

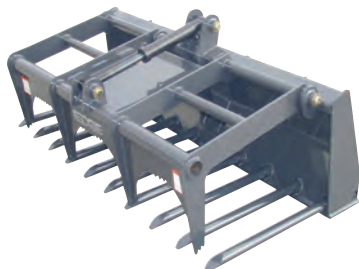
Utility Fork



- Extremely efficient in moving loose items such as hay, manure, branches and limbs
- Ideal uses include landscaping and agricultural applications
- Excellent visibility of the load and the fork to get close to fences or sides of stalls or buildings
- Available in sizes from 54" (1372 mm) to 78" (1981 mm)

Model	Weight (lb/kg)	Overall Width (in/mm)	Height (in/mm)	Depth (in/mm)	Tine Spacing (in/mm)	Tine Diameter (in/mm)
UF54	380/172	54.5/1384	21.4/544	27.3/693	5.9/150	1.5/33
UF60	585/265	61.3/1557	21.5/546	33.5/851	5.4/137	1.75/44
UF66	540/245	67.3/1709	21.5/546	33.5/851	5.3/134	1.75/44
UF66LD	555/252	66.25/1683	22/559	35.5/902	8/203	2/51
UF72	655/297	73.3/1862	21.5/546	33.5/851	5.2/132	1.75/44
UF78	695/315	79.3/2014	21.5/546	33.5/851	5.1/130	1.75/44

Utility Fork with Grapple



- Single-cylinder utility fork with grapple bucket
- Optimal holding of hard-to-handle items, manure, loose hay, bedding and other materials
- Comes complete with hoses and flat faced couplers

Model	Weight (lb/kg)	Overall Width (in/mm)	Height (in/mm)	Depth (in/mm)	Grapple Opening (in/mm)	Tine Diameter (in/mm)
UFG60	875/397	61.3/1557	21.5/546	33.5/851	38/965	1.75/44
UFG66	905/411	67.3/1709	21.5/546	33.5/851	38/965	1.75/44
UFG72	950/431	73.3/1862	21.5/546	33.5/851	38/965	1.75/44
UFG78	990/449	79.3/2014	21.5/546	33.5/851	38/965	1.75/44

CHIPPER

Chip brush, branches and leaves into perfect-size chips for groundcover on pathways or in flowerbeds. Perfect for woodlot owners, arborists and municipalities.

Chipper



- Easy to use standard-flow attachment
- 20" x 20" self-feeding hopper opening
- Handles large, awkward size branches up to 4" in diameter
- Angles brush against blades as it pulls material into chipper
- Air intake vents maximize blowing force
- Powers chips out of the chute up to 20-ft.
- 25" rotor features 2 hardened-steel reversible blades
- Chipping blades angled at 180 degrees to each other to cut, shear and shred wood as it moves through the machine
- Twig breaker moves branches through rotor compartment
- 65" discharge chute with 360 rotation
- Adjustable deflector for accurate placement of wood chips
- Folds up for narrow trails, transport and storage
- Comes complete with hoses and flat face couplers

Model	Weight (lb/kg)	Hyd. Req. (gpm/lpm)	Core Size (in/mm)	Max. Opening (in/mm)	Blade Type	Fan Dia. (in/mm)	Discharge Distance (ft/m)
WC4	740/336	14-24/53-91	4x10/102x254	20x20/508x508	2 Reversible	25/635	20/508

COLD PLANERS

Standard Flow

- Invaluable tool for road construction, utility and maintenance crews
- Quickly mill asphalt and concrete up to 5" depth
- High torque generated by the planetary gearbox
- Hydraulic side-shift controls
- Manual tilt/depth controls
- Comes complete with hoses, hose saver kit, flat-faced couplers and asphalt picks.



Model	Weight (lb/kg)	Hyd. Req. (gpm/lpm)	Tilt (degrees)	Max. Depth (in/mm)	No. of Picks	Working Width (in/mm)	Sideshift (in/mm)
CP12	1033/469	13-25/49-95	+/-15	5/127	36	12/305	24/610
CP16LF	1116/506	20-25/76-95	+/-15	5/127	44	16/406	24/610

High Flow

- Ideal for milling frost heaves, traffic lane stripes and pothole repair
- Optimized tooth pattern delivers power where needed up to 6" depth
- Features electro-hydraulic side shift and tilt/depth control
- Single-circuit planer with 3 hydraulic lines
- Optional dust control water kit lubricates picks and controls dust
- Optional slot cutter for making 2.5" or 4.5" width cuts
- Comes complete with wire harness, control box, hoses, hose saver kit, flat-faced couplers and asphalt picks



Model	Weight (lb/kg)	Hyd. Req. (gpm/lpm)	Tilt (degrees)	Max. Depth (in/mm)	No. of Picks	Working Width (in/mm)	Sideshift (in/mm)
CP16HF	1664/755	24-45/91-170	+/-15	6/152	48	16/406	24/610
CP18	1763/800	26-45/98-170	+/-15	6/152	52	18/457	24/610
CP24	1925/873	28-45/106-170	+/-15	6/152	64	24/610	24/610
CP30	2134/968	28-45/106-170	+/-12.5	6/152	76	30/762	24/610
CP36	2235/1014	34-45/129-170	+/-10	6/152	88	36/914	24/610

High Flow Heavy Duty

- EDGE 40" Heavy Duty High Flow Cold Planer is the most advanced model
- Electric controller for hydraulic side-shift, tilt, depth and optional dust control kit
- Two depth gauges on drum housing for clear visibility
- Easy-open access door for quick maintenance to 89 asphalt picks
- Heavy-duty single-circuit machine with 3 hydraulic lines
- High torque generated by the planetary gearbox
- Removable right side wheel assembly to get close to obstacles or buildings
- Complete with hoses, hose saver kit, large flat-faced couplers and asphalt picks
- Optional dust control water kit lubricates picks and controls dust
- Optional slot cutter for making 2.5" or 4.5" width cuts



Model	Weight (lb/kg)	Hyd. Req. (gpm/lpm)	Tilt (degrees)	Max. Depth (in/mm)	No. of Picks	Working Width (in/mm)	Sideshift (in/mm)
CP40	3125/1418	36-44/136-167	+/-8	5/127	89	40/1016	25/635

CONCRETE TOOLS

Auger Mixing Bucket



- Universal skid steer mount on both sides allows right and left discharge
- Self-loading bucket with horizontal steel auger and rubber flighting
- Handles 1" (25.4 mm) slump concrete, loam, sand, washed gravel up to 3/4" (19 mm), agricultural grains and more
- 1/3 yd³ (9 ft³) mixing capacity and a 1/2 yd³ (13.5 ft³) total capacity
- Orbital motor drive
- Two multi-lined chutes for extended placement and efficient flow
- Comes complete with a 24" and 36" chute, hoses and flat face couplers

Model	Weight (lb/kg)	Hyd. Req. (gpm/lpm)	Height (in/mm)	Cap. (ft ³ /m ³)
AMB	400/181	12/45	29.5/749	13.5/0.38

Concrete Placing Bucket



- Accurate, quick and tidy transport and placement of concrete
- Fits in tight areas that cannot support a cement truck
- Ideal for pouring patios, footings, formed columns or walls
- 1/2 yd³ and 3/4 yd³ capacities
- Hydraulic gate control for precise flow
- 30" (762 mm) chute extension
- Includes hoses and couplers

Model	Weight (lb/kg)	Cap. (ft ³ /m ³)	Height (in/mm)	Width (in/mm)	Carrier Cap. (lb/kg)
CPB4	450/204	13.5/0.38	28/711	58/1473	1200/544
CPB6	500/227	20.25/0.57	30/762	58/1473	1700/771

Mixer



- Welded steel drum with 3 internal paddles
- Uniform mixing and clean dumping
- Direct hydraulic drive of the gearbox for less maintenance
- 5 ft³ (.142 m³) mixing capacity, 11 ft³ (.311 m³) drum capacity
- Comes complete with parking stand, adjustable drum speed control valve, hoses and flat face couplers

Model	Weight (lb/kg)	Hyd. Req. (gpm/lpm)	Drum Cap. (ft ³ /m ³)	Mixing Cap. (ft ³ /m ³)
CM5S	395/179	8/30	11/0.311	5/0.142

Slab Lifter Bucket



- Quickly and easily lift, remove and transport entire slabs of concrete
- Use on sidewalks, driveways and any construction site
- Three heavy-duty teeth with 1-1/2" (38 mm) shanks made of T-1 steel and replaceable points with rubberized flex pins

Model	Weight (lb/kg)	Height (in/mm)	Depth (in/mm)	Working Width (in/mm)	Slab Thickness (in/mm)
SLB	635/288	21/533	48/1219	24/610	7.5/191

GRAPPLES

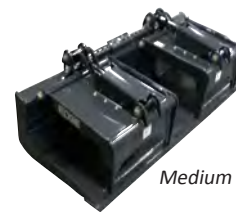
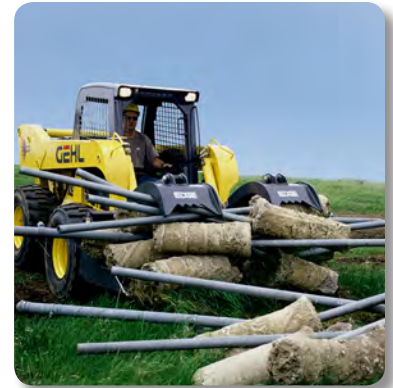
Grapple Buckets

- Move heavy, awkward size and hard-to-handle materials
- Independently operating grapple arms for powerful clamping on uneven loads
- Enclosed cylinders and hoses to protect against debris
- Come complete with hoses and flat face couplers

Model	Weight (lb/kg)	Overall Width (in/mm)	Height (in/mm)	Depth (in/mm)	Grapple Opening (in/mm)
GB60	793/360	60/1524	20.5/521	31.5/800	51/1295
GB66	847/384	66/1727	20.5/521	31.5/800	51/1295
GB72	940/426	72/1828	20.5/521	31.5/800	51/1295
GB78	978/444	78/1981	20.5/521	31.5/800	51/1295
IGB72	1100/499	73.5/1866	22.5/571	35.5/902	40/1016
IGB78	1140/517	79.5/2019	22.5/571	35.5/902	40/1016
IGB84	1200/544	85.5/2171	22.5/571	35.5/902	40/1016
IGB90	1260/572	91.5/2324	22.5/571	35.5/902	40/1016
HDGB74	1279/580	74/1879	19/483	37.84/961	45.36/1152
HDGB83	1400/635	83/2108	19/483	37.84/961	45.36/1152
HDGB88	1435/651	88/2235	19/483	37.84/961	45.36/1152



Standard Duty



Medium Duty



Heavy Duty

Brush Root Grapple Standard

- Designed for handling awkward materials such as logs, tree stumps, brush, loose hay or straw
- 39", 43", 48" and 54" grapples feature one cylinder and grapple arm
- 60", 66", 72", 78", and 84" grapples feature two cylinders and two grapple arms
- Come complete with hoses and flat face couplers

Model	Weight (lb/kg)	Overall Width (in/mm)	No. of Cylinders/ Grapple Arms	No. of Tines	Grapple Opening (in/mm)
RG39	265/120	39/991	1	8	38.6/980
RG43	285/129	43/1092	1	8	38.6/980
RG48	452/205	48/1219	1	7	38.6/980
RG54	502/228	54/1372	1	8	38.6/980
RG60	716/325	60/1524	2	7	38.6/980
RG66	723/328	66/1676	2	8	38.6/980
RG72	820/372	72/1829	2	9	38.6/980
RG78	865/392	78/1981	2	10	38.6/980
RG84	913/414	84/2083	2	11	38.6/980



Single Cylinder



Dual Cylinder

Brush Root Grapple Heavy Duty

- Full-featured units with dual, independent grapples arms to handle uneven loads
- Cushioned cylinders and cylinder/hose guards protect all cylinder components
- Hardened 1-1/4 cylinder pivot pins
- 100,000 PSI yield strength tine material for increased durability
- Standard load check valve for positive clamp force
- Come complete with hoses and flat face couplers



Model	Weight (lb/kg)	Overall Width (in/mm)	No. of Tines	Opening Height (in/mm)
RGHD72	925/420	73/1854	14	40/1016
RGHD78	999/453	79/2007	14	40/1016
RGHD84	1054/478	85/2159	16	40/1016
RGHD90	1105/501	91/2311	16	40/1016

GRAPPLES

Industrial Tine Grapple



- Excellent for moving heavier, hard to handle materials
- Move logs, pipe, brush and scrap materials
- Grapples function independently to allow for uneven loads
- Hoses and couplers included

Model	Weight (lb/kg)	Overall Width (in/mm)	Tine Spacing (in/mm)	No. of Tines	Cylinder Size(s) (in/mm)	Grapple Opening (in/mm)	Tine Dia./ Width (in/mm)
ITG60	1040/472	61.25/1555	7.06/179	9	2x8.375/51x213	39.5/1003	2/51
ITG66	1110/503	67.25/1708	6.93/176	10	2x8.375/51x213	39.5/1003	2/51
ITG72	1375/624	73.25/1860	4.6/117	11	2x8.375/51x213	41.25/1047	2.25/57
ITG78	1445/655	79.25/2012	4.5/114	12	2x8.375/51x213	41.25/1047	2.25/57
ITG84	1515/687	85.25/2165	4.9/124	13	2x8.375/51x213	41.25/1047	2.25/57

Skeleton Rock Grapple



- See-through design allows for excellent visibility and complete protection of hose routing
- Features bushings at all pivot locations and fully gusseted tine tips
- Designed to scrape with loader arms against boom stops
- Comes complete with hoses and flat face couplers

Model	Weight (lb/kg)	Overall Width (in/mm)	Tine Spacing (in/mm)	No. of Tines	Cylinder Size(s) (in/mm)	Grapple Opening (in/mm)	Depth (in/mm)
SRG60	940/426	61/1549	2.9/74	19	2x8.375/51x213	37/940	42.9/1090
SRG66	990/449	67.6/1717	2.9/74	21	2x8.375/51x213	37/940	42.9/1090
SRG72	1035/469	74.3/1887	2.9/74	23	2x8.375/51x213	37/940	42.9/1090
SRG78	1080/490	80.9/2055	2.9/74	25	2x8.375/51x213	37/940	42.9/1090
SRG84	1125/510	87.5/2223	2.9/74	27	2x8.375/51x213	37/940	42.9/1090

Skeleton Tine Grapple



- Features bushings at all pivot locations
- Two-cylinder independent grapple
- Comes complete with hoses and flat face couplers

Model	Weight (lb/kg)	Overall Width (in/mm)	No. of Tines	Cylinder Size(s) (in/mm)	Grapple Opening (in/mm)	Depth (in/mm)
STG66	920/417	68/1727	8	2x8.375/51x213	37.6/955	36.5/927
STG72	960/435	74/1880	9	2x8.375/51x213	37.6/955	36.5/927
STG78	1000/454	80/2032	10	2x8.375/51x213	37.6/955	36.5/927
STG84	1020/463	86/2184	10	2x8.375/51x213	37.6/955	36.5/927
STG90	1060/481	91.5/2324	11	2x8.375/51x213	37.6/955	36.5/927

Utility Fork Grapple



- Designed to handle bulk materials, loose hay, straw, manure, sod and silage
- Single-cylinder versatile tool
- Comes complete with hoses and flat face couplers

Model	Weight (lb/kg)	Overall Width (in/mm)	Tine Spacing (in/mm)	Height (in/mm)	Depth (in/mm)	Grapple Opening (in/mm)	Tine Dia./ Width (in/mm)
UFG60	875/397	61.3/1557	5.4/137	21.5/546	33.5/851	38/965	1.75/44
UFG66	905/411	67.3/1709	5.3/134	21.5/546	33.5/851	38/965	1.75/44
UFG72	950/431	73.3/1862	5.2/132	21.5/546	33.5/851	38/965	1.75/44
UFG78	990/449	79.3/2014	5.1/130	21.5/546	33.5/851	38/965	1.75/44

Bolt on Grapple

- Fits most buckets
- Width is adjustable from 48" (1219 mm) to 60" (1524 mm) and from 60" (1524 mm) to 84" (2133 mm)
- Complete with hoses and flat face couplers

Model	Weight (lb/kg)	Min. Bucket Width (in/mm)	Max. Bucket Width (in/mm)	Grapple Width (in/mm)	Depth (in/mm)	Grapple Opening (in/mm)
BOG60	260/118	48/1219	60/1524	38/965	28/711	40/1016
BOG84	310/141	60/1524	84/2134	52/1321	30/762	42/1067

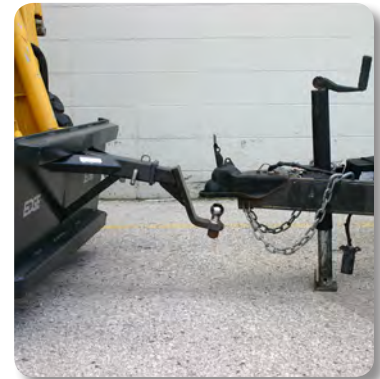


HITCH ADAPTER

Hitch Adapter

- A handy, economical attachment every skid steer operator should have
- Move implements, trailers, wagons, boat trailers or other equipment easily
- Full view of the equipment as you are moving
- Maximize storage space by precisely placing equipment
- Utilizes a Class 3 receiver
- Universal mount to fit any skid steer loader
- Features durable, heavy steel construction frame

Model	Weight (lb/kg)	Height (in/mm)	Width (in/mm)	Depth (in/mm)
HASSL	117/53	17.5/445	46/1168	12/305



LAND LEVELERS

With Scarifier

- Landscape preparation attachment
- Sift dirt and remove large chunks and rocks
- Smooth out lots, roads and trails
- Prepare running tracks and ball fields
- Scarifier loosens hard ground while grading
- Nine 6" long teeth dig in and break up hard packed soil
- 1.5" (38 mm) x 6" (152 mm) hydraulic cylinder engages teeth
- Unique brackets on top of the frame hold a bucket for transport
- Complete with bolt on reversible cutting edges, hoses and flat face couplers



Model	Weight (lb/kg)	Overall Width (in/mm)	Working Width (in/mm)	No. of Teeth	Tine Length (in/mm)
LL72S	895/406	73/1854	72/1828	9	6/152
LL78S	930/422	80/2032	78/1981	9	6/152
LL84S	1025/465	86/2184	84/2133	9	6/152

Without Scarifier

Model	Weight (lb/kg)	Overall Width (in/mm)	Working Width (in/mm)
LL72	660/299	73/1854	72/1828
LL78	735/333	80/2032	78/1981
LL84	770/349	86/2184	84/2133



LOG GRAPPLES

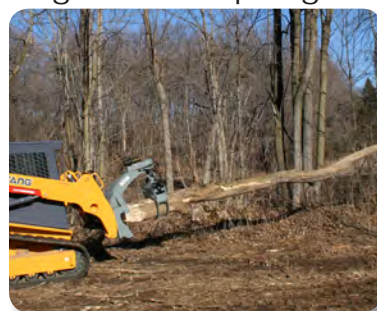
Log Grapple



- Handle logs, poles, pipes, brush, culverts and other bulky materials
- 2" x 8" cylinders, and will close to a log or pipe as small as 6"
- Includes hoses and flat-faced couplers
- Capacity based on load capacity of the skid steer loader

Model	Weight (lb/kg)	Overall Width (in/mm)	Tine Length (in/mm)	Cylinder Size(s) (in/mm)	Opening Height (in/mm)	Cap. (lb/kg)
LG48	610/277	40/1016	28.4/721	2x8/51x203	43.1/1095	6400/2903

Log Puller / Spring Rotating Grapple



- Not just for logs!
- Versatile attachment designed to lift and handle heavy, awkward size material with controlled precision
- Move logs, culverts, water pipes, telephone poles and more
- Load, unload and transport material up to 1500 lbs.
- Serrated cradle steadies material for straight-on loading or transport
- Grapple tines open to a maximum of 39"
- Folds as tight as 3" to hold pipe, brush or smaller material
- Spring-centered grapple rotates up to 180 degrees
- Spring-centered return, lateral lock and in-line lock positions
- Handle material at different angles
- Complete with hose saver kit, hoses and flat face couplers



Model	Weight (lb/kg)	Grapple Opening (in/mm)	Rotation	Overall Width (in/mm)	Overall Ht. (in/mm)	Depth (in/mm)	Cap. (lb/kg)
LP40	477/216	3-39/76-991	180 degrees	48/1219	40/1016	48/1219	1500/680

LOG SPLITTER

Log Splitter, Inverted



- Never touch or lift heavy logs again - no more back-breaking log splitting
- Stay in the comfort of the cab and operate all of the controls
- Position the log by pushing with front of the splitter
- Split logs up to 24" long right on the ground
- Lift logs and transport to another location for splitting
- Powerful cylinder 20 tons of force to it's splitting wedge
- Runs on standard 10-20 gpm hydraulic flow
- Can be flipped 180 degrees for upright splitting applications
- Comes complete with hoses and flat face couplers

Model	Weight (lb/kg)	Cylinder Size(s) (in/mm)	Power	Max. Log Length (in/mm)	Hyd. Req. (gpm/lpm)
LSI24S	339/154	4x24/102x610	20 Tons	24/610	10-20/38-76

MATERIAL UNROLLER

- Pick up erosion control material rolls off of a truck
- Hydraulically pivot 180 degrees to begin unrolling
- Material can be unrolled from either side of the skid steer loader
- Free wheeling stem hub allows arm to float above or below horizontal position
- Can be locked in upright position for transport
- Contractors can cut their labor in half
- Comes complete with hoses and flat face couplers
- Optional stem extensions from 48 inches (1219 mm) to 96 inches (2438 mm)



Model	Weight (lb/kg)	Pivot (degrees)
MU	530/240	180

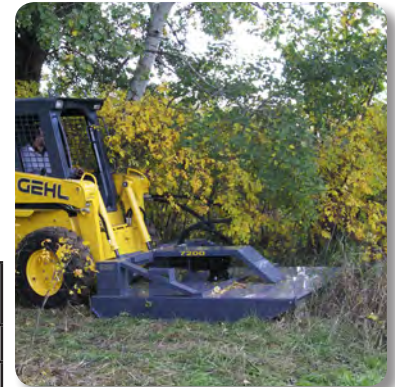


MOWERS, ROTARY

- Cut through the thickest brush and glide over rough terrain with ease
- Handles heavy weeds, undergrowth, brush and small saplings up to 4" (102 mm) in diameter
- Will mow brush down, but won't bog down your motor
- Clear trails for horses, snowmobiles, skiing or biking in areas normally inaccessible
- Available for standard or high-flow hydraulic systems
- Feature a direct drive hydraulic motor
- Heavy duty stump jumper
- Comes complete with hoses and flat face couplers



Model	Weight (lb/kg)	Hyd. Req. (gpm/lpm)	Working Width (in/mm)	Max. Tree Size (in/mm)	No. of Blades
RM48	735/333	8-20/30-76	48/1219	3/76	2
RM60	875/397	15-25/57/95	60/1524	3/76	2
RM66	955/433	18-30/68-114	66/1676	3/76	2
RM72	1015/460	18-30/68-114	72/1828	3/76	2
RM78	1080/490	18-30/68-114	78/1981	3/76	2
RM78H	1100/499	30-40/114-151	78/1981	4/102	2
RM90H	1235/560	30-40/114-151	90/2286	4/102	4



MULCHER

- Efficient mulching in land clearing applications on standard-flow hydraulics
- Safety push bar forces brush or small trees down into mulcher teeth
- Remainder of plant is shredded as machine moves through the working area
- Mulches small trees up to 6" in diameter
- Skid shoes keep the grinding at ground level or up to 1" below grade
- 96 carbide-tipped teeth for long tooth life, smooth operations and fine mulch
- Rotor designed with 6 staggered rows of teeth around the circumference
- Rear chain shield helps control flying debris
- Hydraulic pressure gauge on back of mulcher for operator to view at all times
- Relief valve in hydraulic circuit prevents overloading drive components
- Comes complete with hoses and flat face couplers



Model	Weight (lb/kg)	Hyd. Req. (gpm/lpm)	No. of Teeth	Digging Depth (in/mm)	Working Width (in/mm)	Overall Width (in/mm)
M48SF	1425/646	16-21/61-80	96	1/25	48/1219	62/1575

PALLET FORKS, EDGE



Standard Duty Frames

- Great strength pallet fork frame at a great price
- Side steps and tapered frame make getting in and out of the cab easy
- See-through brick guard provides great visibility
- Individual tines sold separately



Custom-brand YOUR DEALER NAME FREE!

Model	Weight (lb/kg)	Cap. (lb/kg)	Width (in/mm)	Tine Type
PFM	178/81	4500/2041	45.5/1156	Class II
PFMW	238/108	4500/2041	50.5/1283	Class II



Medium Duty Walk-Through Frames

- Strength and durability with convenience of a walk-through style frame
- Easier access to and from the cab and recommended for machines with a cab enclosure
- Includes spill guard
- Individual tines sold separately



Custom-brand YOUR DEALER NAME FREE!

Model	Weight (lb/kg)	Cap. (lb/kg)	Width (in/mm)	Tine Type
PFM	178/81	4500/2041	45.5/1156	Class II



Heavy Duty Frames

- Designed for tough applications and high horsepower skid steers
- Side steps make getting in and out of the cab easy
- Standard see-through spill guard provides excellent visibility
- Individual tines sold separately



Custom-brand YOUR DEALER NAME FREE!

Model	Weight (lb/kg)	Cap. (lb/kg)	Width (in/mm)	Tine Type
PFH	198/90	5000/2268	45.5/1156	Class II
HDPFFW	392/178	5000/2268	60/1524	Class II



Pallet Fork Grapple



- Single cylinder grapple
- Unique jaw action pulls material toward frame as jaw closes
- 4 options to pin the cylinder to grapple, maximizing grapple opening or closing
- Position can be changed in minutes for clamping small pipe to large culverts
- Can also be used for moving loads of plywood or other building materials
- Individual tines sold separately
- Comes complete with hoses and flat face couplers

Model	Weight (lb/kg)	Grapple Opening (in/mm)	Depth (in/mm)	Cap. (lb/kg)	Overall Width (in/mm)	Tine Type
PFG	416/189	56/1422	48/1219	5000/2268	47/1194	Class II

PALLET FORKS, HYDRAULIC

Ideal for a variety of applications, including nursery, recycling, industrial and others.

Rotating Pallet Forks

- Hydraulically control pallet fork rotation
- Tines are manually adjustable
- Ideal for loading pallets on uneven surfaces
- 180 degree one direction rotation
- Complete with hoses and flat face couplers



Side Shift Pallet Forks

- Hydraulically side shift from loader
- 16" (60 mm) travel
- 8" (30 mm) to right or left
- Tines are manually adjustable
- Complete with hoses and flat face couplers



Sliding Tine Pallet Forks

- Hydraulically control pallet fork tines
- Tines adjusted equally to keep load centered
- Ideal for clamping objects
- Complete with hoses and flat face couplers



POST DRIVERS

Post Driver

- Essential for landscapers, grounds keepers and rental centers
- Drive posts as wide as 10.875" (276 mm) into the ground
- Finished posts as low as 53" (1346 mm) above ground
- Easily maneuver around buildings, storage sheds, trees and other obstacles
- Hydraulic driving action eliminate air pockets in the soil, providing an immediate air-tight post set
- Self-contained hydraulics for easy hook up
- Tilts front to back (F) and side to side (S)

Model	Weight (lb/kg)	Hyd. Req. (gpm/lpm)	Tilt (degrees)	Impact at Full Stroke (lb/kg)	Max. Post Size
PD35S	970/440	12/45	15 F/S	71,500/32,432	8.75x120/222x3048
PD50S	1210/549	15/57	20 F/25 S	100,000/45,359	10.875x120/276x3048



Post Pounder and Puller

- Cost effective fence installation and demolition all in one
- Single-person operation
- Drive posts up to 10" wide and up to 10' long into the ground in minutes
- No need to ever touch the post by hand
- Clamp post, position it with 12" plumb chain and drive it into the ground
- Finished posts as low as 18" above ground
- Not recommended with decorative posts or cyclone pipe posts
- Can also remove wooden or metal fence posts quickly and easily
- Ideal in agricultural applications or for property line fences
- Recommended minimum skid steer lift capacity of 1650 lbs.
- Complete with hoses and couplers



Shown with optional T-Post adapter



Model	Weight (lb/kg)	Hyd. Req. (gpm/lpm)	Impact at Full Stroke (lb/kg)	Max. Post Size
PP25S	650/295	15/57	50,000/22,680	10x120/254x3048

RAKES

Auto Rake



- Remove rocks, groom and finish soil for seeding
- Collects rocks from 3/4" up to 6" (152 mm) in diameter
- Places rocks and debris in its bucket for dumping later
- Comes complete with hoses and flat face couplers

Model	Weight (lb/kg)	Hyd. Req. (gpm/lpm)	Cap. (ft³/m³)	Working Width (in/mm)
AR66	1092/495	10-25/37-94	13/0.37	66/1676
AR76	1200/544	10-25/38-94	15/0.42	76/1930

Grader Rake



- Economical way to scarify, smooth and level hard-packed soil
- Separates debris from dirt and soil - great in job site cleanup
- Heavy-duty spring tines increase digging action for grading
- Full-floating design oscillates to follow uneven grades
- Hydraulically angles up to 20 degrees right and left
- Comes complete with hose saver kit, hoses and flat face couplers

Model	Weight (lb/kg)	Straight Path (in/mm)	Angled Path (in/mm)	No. of Tines	Cylinder Size(s) (in/mm)
GR82	600/272	82/2083	77.1/1958	32	1x11/25x279
GR92	650/295	92/2337	86.5/2195	36	1x11/25x279

EDGE Power Rake



- Ideal for grading and cleanup work
- Prepares soil from rough-grade to seed-ready in minutes vs. hours
- Dual-motor, direct-drive drum for 40% more power than chain drive
- Bi-directional drum rotation - operates in forward or reverse
- Features hydraulic angle (20 degree right and left)
- Comes complete with hose saver kit, hoses and flat-face couplers

Model	Weight (lb/kg)	Hyd. Req. (gpm/lpm)	No. of Teeth	Angle (degrees)	Angled Path (in/mm)
PR72	1000/454	12-40/45-151	144	20	67/1702
PR90	1110/503	12-40/45-151	180	20	84/2134

Preparator Rake



- Built to handle the toughest ground conditions
- Collect rocks up to 20" (500 mm) in diameter
- Tills compacted soil into a perfect seedbed
- Bi-directional drum operates in forward or reverse
- Comes complete with hose saver kit, hoses and flat face couplers

Model	Weight (lb/kg)	Overall Width (in/mm)	Hyd. Req. (gpm/lpm)	Cap. (ft³/m³)	Working Width (in/mm)
FP66	1340/608	74/1879	10-25/37-94	10.32/0.29	66/1676
FP76	1520/689	84/2133	10-25/37-94	12.5/0.35	76/1930

Scarifier Rake

- Go from an unfinished to a finished seed bed with one easy-to-use attachment
- Loosen hard soil, remove scrub and small vegetation, and prepare soil to produce a perfect grade
- Great for work along driveways and curbs
- No moving parts or hydraulic hookups to slow you down
- Operates in forward or reverse

(Eliminator is a registered trademark of Loegering.)

Model	Weight (lb/kg)	Width (in/mm)	Depth (in/mm)	Height (in/mm)
ESR72	395/179	72/1828	36/914	19/482
ESR84	425/193	84/2134	36/914	19/482



Rock Wheels

Rock Wheel

- Make road or utility cuts up to 15 feet per minute
- Cut widths of 2.5" and 4.5" (633 mm to 114 mm)
- Depth of up to 24" (610 mm)
- Single or dual circuit models
- Includes hoses - couplers and adapters sold separately
- Optional dust control kit lubricates teeth, helps minimize flying debris
- High-flow attachment ONLY

Model	Weight (lb/kg)	Hyd. Req. (gpm/lpm)	Speed (rpm)	No. of Teeth	Depth (in/mm)	Working Width (in/mm)	Productivity (ft/m per minute)
RW18-2	1800/816	26/98	60	42	18/457	2.5/64	(up to) 15/4.6
RW18-4	1800/816	26/98	60	44	18/457	4.5/114	(up to) 15/4.6
RW24-2	2100/953	30/114	60	56	24/610	2.5/64	(up to) 15/4.6
RW24-4	2100/953	30/114	60	66	24/610	4.5/114	(up to) 15/4.6



ROTO TILLERS

Roto Tiller

- Break up clumps and mix compost or other materials into existing soil
- Operate in forward or reverse motion for perfect seedbed preparation
- Offset mount allows working close to obstacles
- Comes complete with hose saver kit, hoses and couplers

Model	Weight (lb/kg)	Overall Width (in/mm)	Hyd. Req. (gpm/lpm)	No. of Tines	Digging Depth (in/mm)	Working Width (in/mm)
TL52	600/272	68/1727	12-40/45-151	28	6/152	52/1320
TL68	695/315	78/1981	15-40/57-151	36	6/152	68/1727



SCALE

Onboard Scale

- Measure, display and record dynamic or static weight of a load
- Load can be on or in a bucket, combination bucket, grapple or pallet fork
- Measures hydraulic pressure in lift arm circuit as load is lifted past a sensor
- Ideal accessory for measuring mulch, stone, feed or other materials
- Weigh material as it is being loaded into a dump truck
- Prevent expensive over-weight tickets

Model	Weight (lb/kg)	Suitable For	No. of Channels	Load Sensor Rating (psi/bar)	System Accuracy	Temperature Range (F/C)
WL100	25/11	Skid Loaders	5	0-3625/0-250	+/-2%	-22 to 122/ -30 to 50
WL200	16/7	Skid/Wheel Loaders	5	0-3625/0-250	+/-2%	-22 to 122/ -30 to 50



Optional printer for Weighlog 200



SCRAPERS

Feed/Alley Scraper



- 1-1/2" x 10" reversible replaceable rubber blade
- 3" of wear per side of edge that is easy on concrete or tiled floor mangers
- 5 off-set adjustments keep feed away from tires
- 8 angle adjustments allow for efficient movement of feed

Model	Weight (lb/kg)	Angle (degrees)	Angled Path (in/mm)	Overall Width (in/mm)	Height (in/mm)
FAS96	520/236	38.4-71.7	75.2-30.1/ 1910-765	96/2438	20/508

Manure Scraper



- Excellent for cleanup in free-stall barns
- Backdrag allows it to efficiently clean out corners and pull material away from walls
- Features reversible 1.5" thick x 10" high rubber compound edges

Model	Weight (lb/kg)	Overall Width (in/mm)	Overall Ht. (in/mm)	Depth (in/mm)
72SBD	670/304	72.8/1849	25/635	52.2/1326
84SBD	725/329	84.8/2154	25/635	52.2/1326
96SBD	785/356	96.8/2459	25/635	52.2/1326

SILAGE DEFACER

Silage Defacer

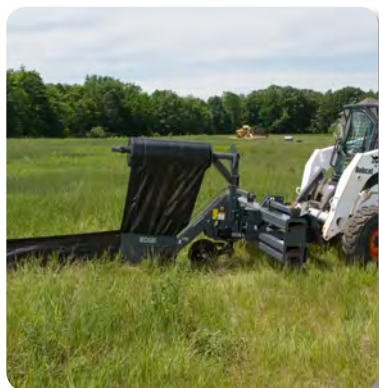


- Perfect for farmers with open-pit silage bunkers
- Reduces spoilage by exposing less surface area to air and moisture
- Open design allows operators to see bunker face when working
- Extended frame for reach 10' beyond skid loader lift height
- Adjustable guides for depth of cut up to 3"
- Comes complete with hoses and flat face couplers

Model	Weight (lb/kg)	Hyd. Req. (gpm/lpm)	Overall Width (in/mm)	Reach (in/mm)	Digging Depth (in/mm)
SF96	1100/499	18-22/68-83	96/2438	120/3048	3/76

SILT FENCE INSTALLERS

Silt Fence Installer



- Built rugged for erosion control professionals
- Install thousands of feet of silt fence per hour by a single operator
- Single-fold design for ease of material loading
- Unique pivoting design allows installation around tight corners
- Coulter cuts through grass or sod for easy installation of silt
- One machine size handles 36", 42" and 48" fabric rolls
- 3-Point models (SFIT) include storage stands (shown)

Model	Weight (lb/kg)	Fabric Roll Widths (in/mm)	Pivot (degrees)	Digging Depth (in/mm)	Offset (in/mm)
SFIS	650/295	36-48/914-1219	40	20/508	n/a
SFIT	825/374	36-48/914-1219	40	20/508	n/a
SFIT72	1260/572	36-48/914-1219	40	20/508	72/1828
SFIT84	1305/592	36-48/914-1219	40	20/508	84/2134

SNOW BLOWERS

- Throw snow up to 45-ft. (13.7 m)
- Poly-lined, hydraulically controlled chute and deflector with 280 degree radius
- Available for standard or high-flow hydraulics
- Optional truck chute kit available for high flow G & H models

Model	Weight (lb/kg)	Hyd. Req. (gpm/lpm)	Cutting Height (in/mm)	Working Width (in/mm)	Auger Dia. (in/mm)	Fan Dia. (in/mm)	No. of Motors
SB48A	745/338	8-13/30-49	25/635	48/1219	14/356	18/457	1
SB60C	795/361	12-16/45-61	25/635	60/1524	14/356	18/457	1
SB60D	795/361	14-21/53-79	25/635	60/1524	14/356	18/457	1
SB72D	845/383	14-21/53-79	25/635	72/1828	14/356	18/457	1
SB72E	845/383	18-27/68-102	25/635	72/1828	14/356	18/457	1
SB84E	895/406	18-27/68-102	25/635	84/2133	14/356	18/457	1
SB72F	1150/522	22-34/83-129	36/914	72/1828	18/457	26/660	1
SB72G	1160/526	19-34/72-129	36/914	72/1828	18/457	26/660	2
SB72H	1160/526	30-42/114-159	36/914	72/1828	18/457	26/660	2
SB84F	1230/558	22-34/83-129	36/914	84/2133	18/457	26/660	1
SB84G	1240/562	19-34/72-129	36/914	84/2133	18/457	26/660	2
SB84H	1240/562	30-42/114-159	36/914	84/2133	18/457	26/660	2
SB96H	1320/599	30-42/114-159	36/914	96/2438	18/457	26/660	2



SNOW PUSHES

Oscillating

- Heavy duty frame oscillates up to 8 degrees along uneven surfaces to keep edge in contact with surface
- Floating side plates and frame link allow the pusher weight to be transferred onto the edge
- Use year round to move other materials such as flood-cleanup wastewater or manure
- Comes with a reversible, replaceable rubber cutting edge with 3" of wear per side
- Optional Pull-Back Kit draws snow back from confined spaces such as loading docks

Model	Weight (lb/kg)	Overall Width (in/mm)	Cap. (ft³/m³)	Height (in/mm)	Oscillation (degrees)
SPO84	1285/583	90/2286	159/4.5	40.8/1036	8
SPO96	1340/608	102/2591	182/5.2	40.8/1036	8
SPO108	1395/633	114/2896	204/5.8	40.8/1036	8



High Profile

- Move up to 12 cubic yards (324 cubic feet) of snow
- Works great for flood clean-up wastewater, manure and other materials.
- Comes with rubber cutting edge and adjustable skid shoes
- Shown with optional pull-back kit

Model	Weight (lb/kg)	Overall Width (in/mm)	Cap. (ft³/m³)	Height (in/mm)
SP96	1205/547	102/2591	189/5.4	39.5/1003
SP120	1425/646	126/3200	243/6.9	39.5/1003
SP144	1948/884	150/3810	270/7.6	39.5/1003
SP168	2118/961	172/4369	324/9.7	39.5/1003



Low Profile

- Great visibility on smaller machines
- Move up to 192 cubic feet of snow,
- Comes with rubber cutting edge and adjustable skid shoes
- Optional pull-back kits

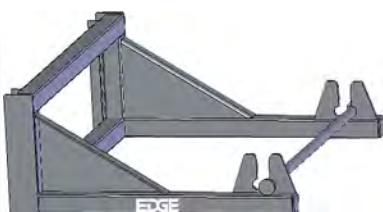


Model	Weight (lb/kg)	Overall Width (in/mm)	Cap. (ft³/m³)	Height (in/mm)
SPL72	751/341	78/1981	108/3.06	28.6/726
SPL84	822/373	90/2286	135/3.82	28.6/726
SPL96	893/405	102/2591	153/4.3	28.6/726
SPL120	1035/469	126/3200	192/5.4	28.6/726



SOD UNROLLER

Sod Unroller



- Strong tubular frame of 3"x3"x1/4" steel
- Handles rolls of sod up to 48" (1219 mm) wide
- Handles rolls up to 60" (1524 mm) in diameter
- Simple design requires no hydraulics
- Requires fiber or plastic cored rolls of sod

Model	Weight (lb/kg)	Max. Opening (in/mm)	Max. Dia. (in/mm)
SU48	180/82	48/1219	60/1524

SPREADERS

Electric Spreader



Rear hitch mount available for Gehl AL340, AL540.



- Handles dry, free-flowing granular materials
- Use for spreading salt, seed and fertilizer (not to be used with sand)
- Ideal for sidewalks, parking lots, driveways and roads
- Engineered with minimal moving parts to reduce maintenance costs
- Heavy-duty 12 volt DC motor in a weather tight enclosure
- Low profile design for operator visibility
- Optional gate assembly to control the flow of light materials
- Optional material deflector kit for sidewalks

Model	Weight (lb/kg)	Cap. (ft³/m³)	Cap. (lb/kg)	Power	Spreading Width (ft/m)
SS5EN	310/141	5/.14	350/159	12-15 amps	4-40/1.2-12
SS5EU	310/141	5/.14	350/159	12-15 amps	4-40/1.2-12

Hydraulic Spreader



- Self-loading 8 cubic foot capacity hopper
- Agitator that prevents material from bridging for smooth flow
- Scoop up sand and begin spreading a path from 29 inches for sidewalks
- Spreads up to 28 feet for larger areas like parking lots or roads
- Material moves down through 3 adjustable gates at bottom of hopper
- An 18" wheel disperses the material
- Steps positioned on both sides of unit for easy access in and out of cab
- Optional Sidewalk Deflector Kit spreads sand precisely at 29 in. or 37 in.
- Comes complete with hoses and flat face couplers

Model	Weight (lb/kg)	Hyd. Req. (gpm/lpm)	Height (in/mm)	Overall Width (in/mm)	Depth (in/mm)	Cap. (ft³/m³)	Spreading Width (ft/m)
SS8H	415/188	10-22/38-83	41/1041	54/1382	32/813	8/.23	2.4-28/.73-8.5

STUMP GRINDERS

Stump Grinder

- Disintegrate tree stumps efficiently and effortlessly
- Carbide steel teeth and easy-to-use controls quickly grind stumps
- Standard and high flow models
- Handle stumps up to 45" (1143 mm) in diameter
- Grinds stumps up to 12" (305 mm) below ground
- Comes complete with hoses and flat face couplers



Model	Weight (lb/kg)	Hyd. Req. (gpm/lpm)	Speed (rpm)	No. of Teeth	Digging Depth (in/mm)	Drum Dia. (in/mm)
SG25	740/336	15-25/56-94	725	23	10/254	24/610
SG50	1140/517	25-40/94-151	795	25	12/304	36/914



Stump Grinder, Self-Feeding

- Unique hinged-pivot self-feeding design for efficient grinding
- Handles stumps up to 30" wide and as deep as 10" below ground
- 24" cutting wheel with 36 teeth
- Compact for transport and storage
- Hydraulic controls are simple to operate
- No need for a separate electric control box
- Easy to hook up and remove from most skid steers
- Comes complete with hoses and flat face couplers



Model	Weight (lb/kg)	Hyd. Req. (gpm/lpm)	No. of Teeth	Digging Depth (in/mm)	Drum Dia. (in/mm)
SGS24	742/337	12-22/45-83	36	10/254	24/610



STUMP REMOVAL BUCKET

Stump Removal Bucket

- Simple, cost-effective tool for removal of tree stumps and roots
- Three 23-Series cast steel teeth dig deep under roots
- Side teeth on the bucket cut through stubborn roots
- Also use for digging ditches, moving trees and installing rock
- 1/2" laser-cut-steel bucket measures 20" high, 62.5" long
- 1" thick cutting edge can dig trenches or ditches as well



Model	Weight (lb/kg)	Overall Length (in/mm)	Overall Width (in/mm)	Height (in/mm)	Depth (in/mm)	Cutting Edge Point Width (in/mm)	Bucket Tip Width (in/mm)
SRB57	372/169	62.5/1587.5	46/1168	20/508	57/1448	16.5/419	14.5/368



TIRES

Solid Flex



- These flat proof tires offer the ride of a pneumatic
- Peace of mind of knowing there will be NO flats
- Made of mining rubber compound that resists tearing and chunking
- Guaranteed to last 3x longer than pneumatic foam filled tires
- Available in smooth and traction treads

Model	Weight (lb/kg)	Width (in/mm)	Tread Depth (in/mm)	Load Rating (lbs/kg)	Overall Dia. (in/mm)	Aperture Design
STS7	219/99	7/178	Smooth	5410/2454	31/787	N/A
STS9	273/124	9/229	Smooth	7230/3279	31/787	N/A
STS10	343/156	10/254	Smooth	5610/2545	33/838	N/A
SFT10	230/104	10/254	1.9/48	6595/2991	31/787	Elliptical
SFT12	280/127	11/279	2.4/61	7915/3590	33/838	Elliptical
SFT14	342/155	11/279	2.8/71	8540/3874	36/914	Elliptical

Severe Duty



- Severe duty tires offer over 1" of tread, with an enhanced rubber compound
- Ideally used in cold planing, demolition or other severe applications

Model	Weight (lb/kg)	Width (in/mm)	Ply Rating	Tread Depth (in/mm)	Load Rating (lbs/kg)	Overall Dia. (in/mm)	Rim Dia. (in/mm)
SEV10	87/39	10/254	10	1.375/35	4710/2136	30.6/777	16.5/419
SEV12	103/47	12/305	14	1.375/35	6780/3075	32.7/830	16.5/419
SEV14	168/76	14/356	14	1.375/35	8540/3873	36.4/927	17.5/445

Heavy Duty



- This is a premium tire with deep tread, premium tread compound, large tread lugs and a large rim guard

Model	Weight (lb/kg)	Width (in/mm)	Ply Rating	Tread Depth (in/mm)	Load Rating (lbs/kg)	Overall Dia. (in/mm)	Rim Dia. (in/mm)
HDT10	56/25	10/254	8	0.75/19	4140/1877	30.3/769	16.5/419
HDT12	74/34	12/305	10	0.8125/21	5600/2540	32.7/830	16.5/419
HDT31	86/39	15.5/394	8	0.75/19	4480/2032	31/787	16.5/419
HDT33	103/47	15.5/394	12	0.8125/21	6835/3100	33/838	16.5/419
HDT14	119/54	14/356	14	0.8125/21	8540/3873	35.7/907	17.5/445

Standard Duty



- Sidewalls are designed to protect against abrasions, tears and punctures

Model	Weight (lb/kg)	Width (in/mm)	Ply Rating	Tread Depth (in/mm)	Load Rating (lbs/kg)	Overall Dia. (in/mm)	Rim Dia. (in/mm)
SD27-85	38/17	8.5/216	8	0.469/12	2890/1390	26.8/680	15/381
SD27-105	46/21	10.5/267	8	0.469/12	3100/1406	27.1/688	15/381
SD10	56/25	10/254	8	0.656/17	4140/1877	30.6/777	16.5/419
SD12	74/34	12/306	10	0.656/17	5600/2540	32.7/830	16.5/419
SD14	102/46	14/356	14	0.75/19	8540/3873	37.2/944	17.5/445

Value Series



- These tires are priced right and intended for light duty applications

Model	Weight (lb/kg)	Width (in/mm)	Ply Rating	Tread Depth (in/mm)	Load Rating (lbs/kg)	Overall Dia. (in/mm)	Rim Dia. (in/mm)
VS27-85	36/16	8.5/216	6	0.531/13	2610/1183	27.5/699	15/381
VS27-105	38/17	10.5/267	6	0.531/13	2610/1183	27.5/699	15/381
VS10	48/22	10/254	6	0.594/15	3500/1588	30.3/770	16.5/419
VS12	68/31	12/610	8	0.719/18	4810/2182	33.6/854	16.5/419
VS14	92/42	14/356	10	0.75/19	6850/3107	36.9/937	17.5/445

TRACKS

Better traction can mean better performance of your skid steer loader. Surfaces made slippery due to sand, snow, mud and rain may mean challenges, but not excuses. Tracks from CEA provide tire protection and reduce tire wear in abrasive conditions.

Crossbar Tracks

- Increase traction and flotation in soft, muddy conditions
- Reduce ground pressure by as much as 50%
- 1-1/4" hardened field-replaceable bushings
- Link designed with 50% deeper end wear areas for longer endurance and operation
- Crossbars and traction bars are induction hardened for greater durability and performance
- Available to fit tires from 8.5" (216 mm) to 14" (356 mm)



Hard Pad Tracks

- Best performing tracks used in sandy soil
- 5" wide pads for improved floatation
- Reducing ground pressure by as much as 50%
- Protects tires and reduces tire wear in abrasive conditions
- Features include 1-1/4" hardened field-replaceable bushings
- Easy installation
- Contractor-grade, heavy duty components
- Two built-in traction bars improve track-to-tire grip
- Easily withstands continued operation on hard surfaces
- Fits skid steers with tires 10" (254 mm) and 12" (305 mm) wide



Soft Pad Tracks

- Replaceable non-marking shoes prevent marring on hard surfaces
- Perform well in adverse conditions such as mud or sand
- Soft shoes are bolt-on and replaceable
- Reduces ground pressure by as much as 50%
- Design is easy on tires and provides strength and tire protection
- Fits skid steers with tires 10" (254 mm) and 12" (305 mm) wide



TREE HANDLERS

Tree Boom Lift



- Ideal for moving trees for transplanting
- Can also be used to load and unload attachments
- Lift and move construction materials from hard to reach areas
- A simple and economical attachment to make your equipment more versatile

Model	Weight (lb/kg)	Length (in/mm)	Cap. (lb/kg)
TB77	182/83	59.25/1505	3500/1588

Tree Handler-Nursery Jaws

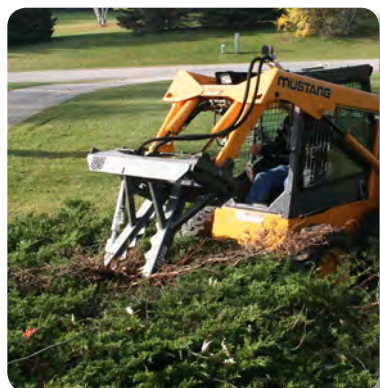


- Upgrade from using forks and you'll never go back!
- Load and unload trees, transport and plant nursery stock
- Move and place boulders
- Forks up to 80" (2032 mm) will carry loads up to 5,000 lbs (2268 kg)
- Use it for balled and burlaped trees up to 60" (1524 mm)
- Boxes up to 48" (1219 mm)
- Pots up to 65 gallon (246 L), depending on the model
- Comes with hoses, couplers sold separately

Model	Weight (lb/kg)	Ball Dia. (in/mm)	Tine Length (in/mm)	Max. Opening (in/mm)	Cap. (lb/kg)
NJII	700/318	50/1270	72/1829	66/1676	3000/1360
NJPP	950/431	60/1524	80/2032	41/1041	5000/2268

TREE PULLER/GRABBING TOOL

Tree Puller/Grabbing Tool



- For landscaping, construction and agriculture applications
- Pull posts, rebar, invasive trees and roots or shrubs
- Single cylinder opens jaws up to 12" (305 mm)
- 3 welded brackets secure hydraulic hoses away from jaws
- Lift capacities are based on the lift capacity of the machine
- Hoses and flat face couplers included
- Optional hose saver kit recommended

Model	Weight (lb/kg)	Max. Opening (in/mm)	Jaw Length (in/mm)	Overall Length (in/mm)	Overall Width (in/mm)	Height (in/mm)
TP12	333/151	12/305	27/686	34.5/876	47.5/1207	20/508

TREE SHEARS

Tree Shear

- Ideal for clearing fence lines and other hard-to-reach areas
- Essential tool in forestry and agricultural applications
- Adjustable, high-tensile steel blades
- Clip hardwoods up to 14" (356 mm) diameter in one snip
- Blades made of AR400 steel
- Low profile design for excellent visibility
- Full-length bushings in the jaws
- Cross-cut "grease galleys" in the hinge pins ensure a long, trouble-free life
- Comes complete with hoses and flat face couplers



High Reach Clipper

- 6-foot reach and rotating cutting head allows access to hard-to-reach areas
- Powerful jaws clip hardwoods up to 9" (229 mm) in diameter
- Clips trees even at ground level
- Easy removal of trees, branches and brush from overrun pastures, fields and fence rows
- Standard-duty model features 100-degree rotating cutting head and in-cab electronic control box
- Heavy-duty model is more robust in design, features 110-degree rotating cutting head and wireless remote control for easy transfer to other equipment
- Comes complete with hoses and flat face couplers



Model	Weight (lb/kg)	Reach (in/mm)	Max. Tree Size (in/mm)	Cylinder Size(s) (in/mm)	Oscillation (degrees)
HRC6	765/347	72/1829	9/229	5x8/127x229	100
HRC6HD	826/375	72/1829	9/229	5x8/127x229	110

TREE SPADES

Tree Spades

- Dig holes, move and completely transplant trees and shrubbery
- Economical and versatile attachment can also be used to move boulders
- Features 3/8" (9.5 mm) plate with tapered and sharpened edges
- Available for ball sizes from 36" (914 mm) to 48" (1219 mm)



Model	Weight (lb/kg)	Ball Dia. (in/mm)	Digging Depth (in/mm)
TS36	258/117	36/914	36/914
TS42	360/163	42/1067	42/1067
TS48	425/193	48/1219	48/1219



U-Blades

- Transplant and remove trees and shrubs, dig, trench
- Break up hard soil and rocks
- This versatile attachment can also be used to cut sod
- Blade is made of 3/8" high carbon steel
- Open design allows forward and backward digging up to 48" (1219 mm)

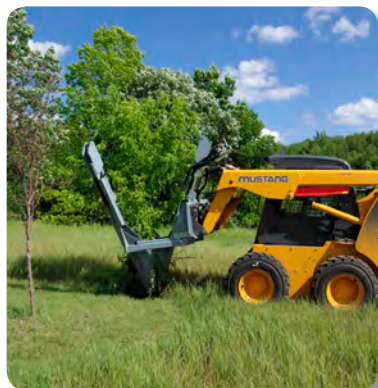


Model	Weight (lb/kg)	Ball Dia. (in/mm)	Digging Depth (in/mm)
UBV26	370/168	26/660	48/1219
UBV36	390/177	36/914	48/1219
UBV30	390/177	30/762	48/1219



TREE TRANSPLANTERS

Tree Transplanters



- Perfect for landscapers and nursery owners
- Plant, transplant and remove trees
- Transplants mature trees with up to 50" diameter root balls
- Semi-truncated 1/4" high alloy steel blades
- Come complete with hoses and flat face couplers

Model	Weight (lb/kg)	Ball Dia. (in/mm)	No. of Blades	Hyd. Req. (gpm/lpm)	Overall Width (in/mm)	Length (in/mm)
TTS324	990/449	24/610	3	5-25/19-94	75/1905	68/1727
TTS330	1450/658	30/762	3	5-25/19-94	90/2286	81/2057
TTS440	1850/839	40/1016	4	5-25/19-94	84/2134	84/2134
TTS650	3025/1372	50/1270	6	5-25/19-94	96/2438	112/2845

TRENCHERS

Trencher



- Various chain types to suit the soil type and size of project
- Double-flighted spoil auger
- Excellent wear resistance on the drive sprocket
- 24"-48" (609-1219 mm) digging depths
- 6"-12" (152-305 mm) trench widths
- Manual or hydraulic side-shift to get up close to buildings
- Single Standard chains recommended for loose, damp soil
- Double Standard chains recommended for harder, drier soil and has roughly twice the number of teeth
- Half Rock & Frost chains recommended for harder, frozen and rocky digging conditions
- Come complete with trench cleaner arm, hoses and flat face couplers



Model	Weight (lb/kg)	Hyd. Req. (gpm/lpm)	Digging Depth (in/mm)	Side Shift
XR14S	800/363	10-20/38-76	24-48/610-1219	Hydraulic
XR14	810/367	10-20/38-76	24-48/610-1219	Manual
XR21	1200/544	13-25/49-95	36-60/914-1524	Manual
XR21S	1250/567	13-25/49-95	36-60/914-1524	Hydraulic
XR25	1300/590	16-26/61-99	36-60/914-1524	Manual
XR35	1200/544	20-40/76-151	36-60/914-1524	Manual

TRENCH FILLER

Trench Filler

- Cover 60 feet of open trench in 60 seconds
- Straddle trench and cover in one pass, eliminating tearing of turf
- Available in right offset, left offset or centered models
- Ideal for large backfilling jobs
- Comes complete with hoses and flat face couplers



Model	Weight (lb/kg)	Overall Width (in/mm)	Hyd. Req. (gpm/lpm)	Working Width (in/mm)	Auger Dia. (in/mm)	Overall Ht. (in/mm)	Trench Position
TFC54	350/159	66/1676	6-20/22-75	54/1372	12/302	19/482	Centered
TFL54	350/159	66/1676	6-20/22-75	54/1372	12/302	19/482	Left
TFR54	350/159	66/1676	6-20/22-75	54/1372	12/302	19/482	Right

VIBRATORY ROLLERS

- Heavy duty motor mounted outside the drum for less wear and easier maintenance
- Knockdown blade has replaceable cutting edge
- Oversized bearings and high temperature seals minimize bearing failure
- Flow control valve to prevent over-speeding of the eccentric shaft and extend bearing life

Pad Foot

- The pad-foot roller compacts cohesive, clay-type materials easily
- Centrifugal force of up to 9,765 lbf (43.4 kN)
- Widths of 73" (1854 mm) and 84" (2133 mm)
- Comes complete with hoses and flat face couplers



Model	Weight (lb/kg)	Hyd. Req. (gpm/lpm)	Working Width (in/mm)	Centrifugal Force (lbf/kN)
VR73P	2200/998	10-50/38-189	73/1854	8850/39.4
VR84P	2300/1043	10-50/38-189	84/2133	9765/43.4

Smooth Drum

- Ideal tool for compacting dirt, sand, gravel, asphalt or backfill
- Widths of 73" (1854 mm) and 84" (2133 mm)
- Centrifugal force up to 9765 lbf (43.4 kN)
- Comes complete with hoses and flat face couplers



Model	Weight (lb/kg)	Hyd. Req. (gpm/lpm)	Working Width (in/mm)	Centrifugal Force (lbf/kN)
VR73S	2050/930	10-50/38-189	73/1854	8850/39.4
VR84S	2300/1043	10-50/38-189	84/2133	9765/43.4

Other product lines from CEAttachments...

Compact Excavator Attachments...



Compact Utility Tractor Attachments...



ceattachmentsinc.
Every Attachment for EVERY Job.®

Toll Free 866.232.8224
ceattachments.com



EDGE is a registered trademark of Compact Equipment Attachments Inc.
Other trademarks depicted are the property of their respective owners.

590792-0414